

Winnebago County Action Team



Partnering to Better Serve
Children and Families in
Our Community

Permanency Enhancement Project

*Presentation Developed by NIU
Center for Child Welfare and
Education*

Permanency in Illinois

- ▶ Illinois is one of the lowest performing states as it pertains to permanency
- ▶ Median length of stay in foster care in Illinois is 32.7 months (as of 09-30-15*)
- ▶ Cases open after 36 months
 - African American – 44%
 - Hispanic – 34%
 - White – 31%

*Data Source: Fostering Court Improvement
<http://fosteringcourtimprovement.org/il/DCFSRegion/Northern/>

Children of Color in Child Welfare

- Higher occurrence of placement changes
- Stay in the system longer
- Less likely to be adopted
- Less likely to be reunified
- Receive fewer supports

Child Welfare Information Gateway. (2011). Addressing racial disproportionality in child welfare. Washington, DC: U.S. Department of Health and Human Services, Children's Bureau.

Northern Region PEP Vision

Improve permanency outcomes and reduce disproportionality and disparity of foster care in partnership with the



Common Terms in Describing Outcomes

Disproportionality



The over or underrepresentation of a particular group in a program or system.

Disparity



The differences observed in treatment, outcomes, resources and services between two or more groups.

Equality



Everyone should be treated in exactly the same way.

Equity



Everyone should be treated in ways that meet their specific needs so they have a fair opportunity to achieve their potential.

PEP Regional Goals

- Improve remain home permanency outcomes
- Improve return home permanency outcomes
- Improve adoption/guardianship permanency outcomes
- Reduce disproportionality and disparate outcomes of African American and Hispanic youth in foster care



PEP History

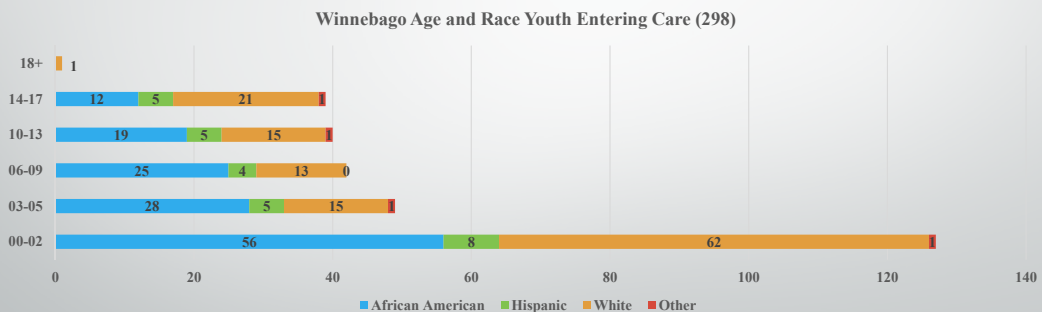
- Partnership with DCFS African American Advisory Council, Illinois African American Family Commission, Universities*
- Focus groups with stakeholders, town hall meetings, community forums, and regional symposiums
- Anti-racism training for DCFS staff and communities
- Partner with community to form and sustain action teams co-led by DCFS and community representative

*Partnership Universities include Illinois State University, Southern Illinois University (Edwardsville), Northern Illinois University, and University of Illinois at Chicago.

Youth in Foster Care in Winnebago County

- How many are there?
- How old are they?
- Where do they live?
- What are their permanency goals?

Youth Entering Foster Care in Winnebago County

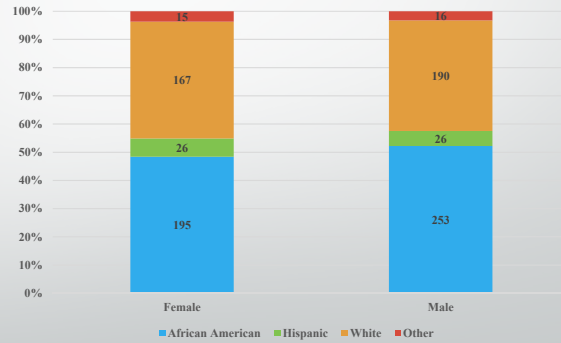


Data Source: DCFS Quality Assurance, 07/01/17 – 06/30/18

Number of Youth in Foster Care in Winnebago County

- 888 Total Children
- 403 Female (45%)
- 485 Male (55%)

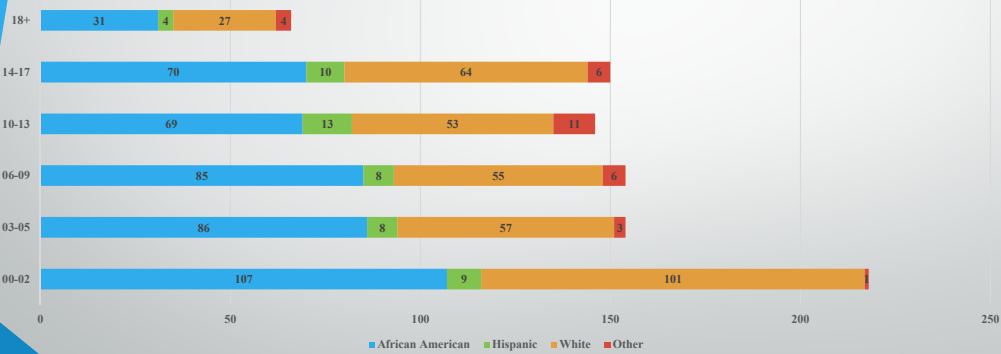
Winnebago Gender and Race Youth in Care (888)



Data Source: DCFS Quality Assurance, 07/01/17 – 06/30/18

Age of Youth in Foster Care in Winnebago County

Winnebago Age and Race Youth in Care (888)



Data Source: DCFS Quality Assurance, 07/01/17 – 06/30/18

Where the Children Live

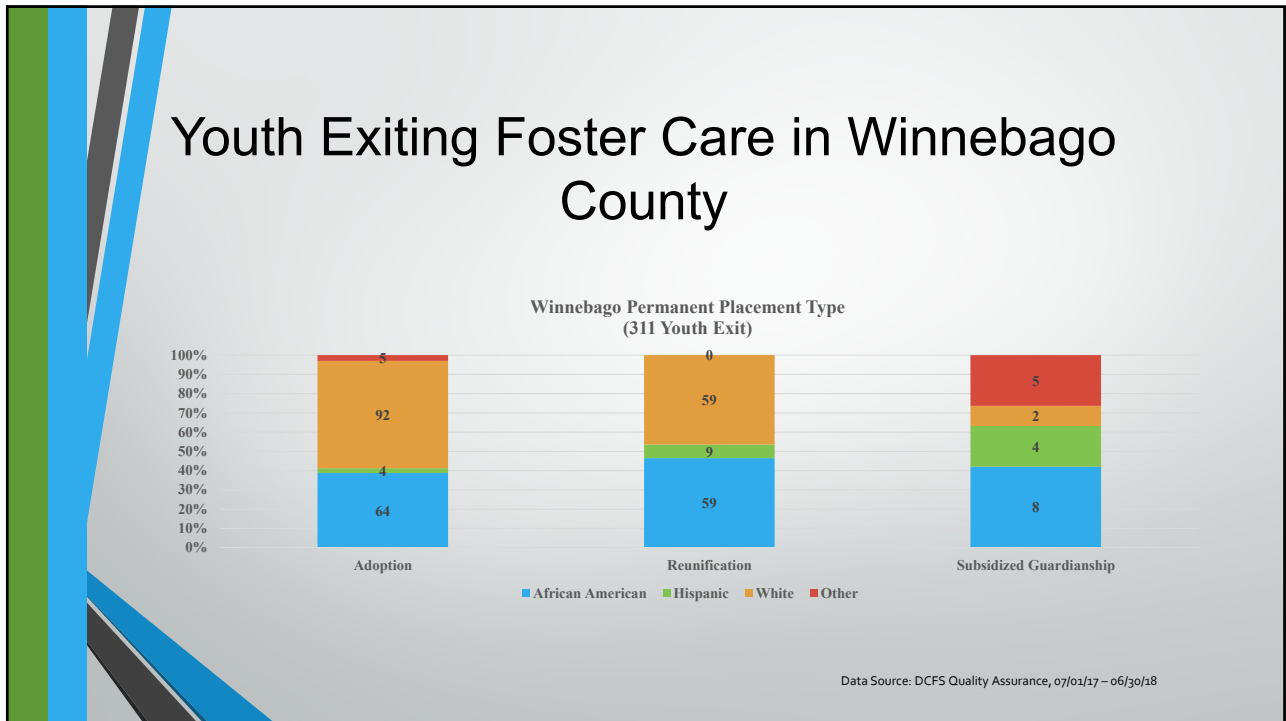
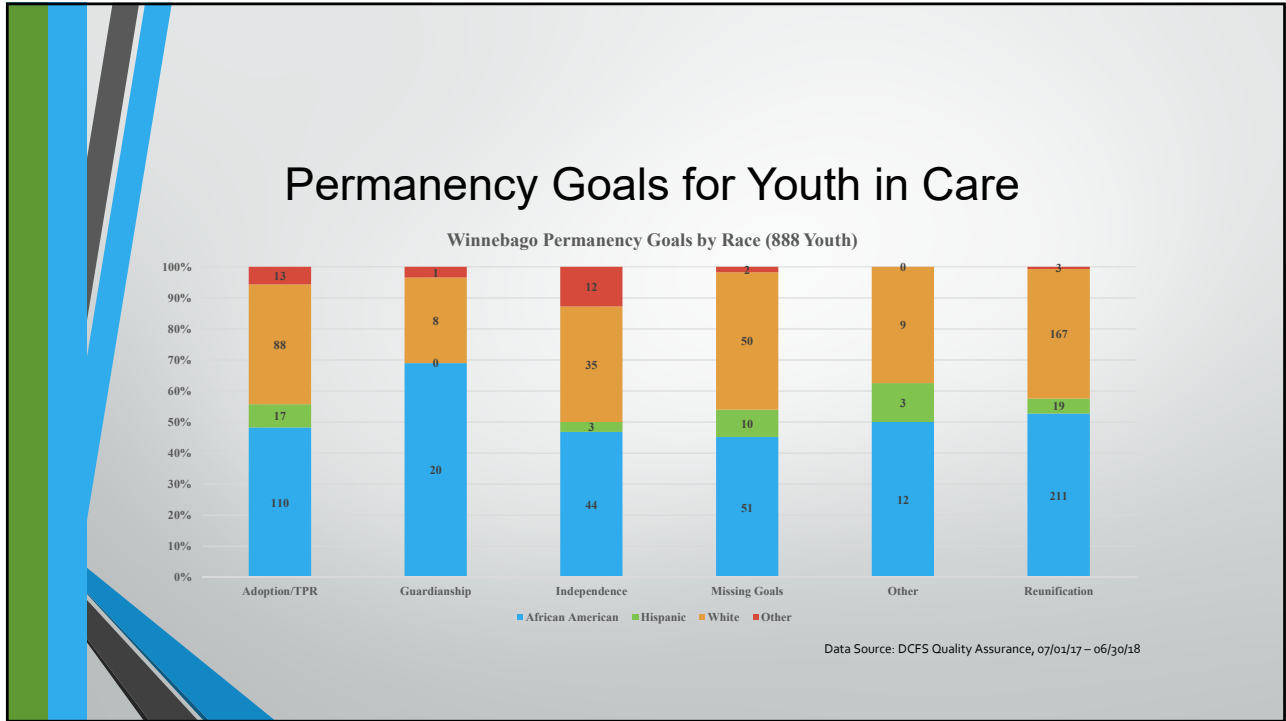
- Foster/Relative homes – 704
- Residential – 41
- Other Institutions – 88
- Independent Living – 21
- Other Care – 34



Data Source: DCFS Quality Assurance, 07/01/17 – 06/30/18

Permanency Goals of Youth in Care in Winnebago County

- Foster Care is meant to be temporary, not permanent.
- The permanency goals for foster care children are:
 - Return Home 45%
 - Adoption and Guardianship 29%
 - Independence 11%
 - Other 3%



Allegation Substantiation Process

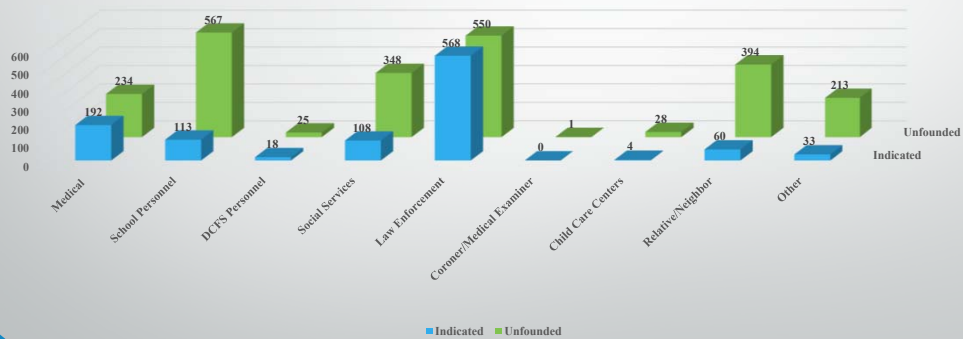
- ▶ Hotline Report – hotline decides whether to accept a report of abuse or neglect based on DCFS guidelines
- ▶ Investigation – each report is investigated for evidence of abuse and or neglect and risk of danger in the home
- ▶ Unfounded Allegation – no credible evidence of abuse or neglect
- ▶ Indicated Allegation – found credible evidence of abuse or neglect, report is substantiated

Sources of Reports

- ▶ Law Enforcement (1118) and School Personnel (680) filed the highest number of reports
- ▶ Child Care Centers (88%) and Relative/Neighbor and Other (87% each) had the highest percent of unfounded reports within each group's total number of reports

Sources of Reports

Winnebago Source of Reports



Data Source: DCFS Quality Assurance, 07/01/17 – 06/30/18

Abuse and Neglect Allegations

- Total Allegations Reported 5,897
- Total Indicated Allegations 1,445
- Abuse Allegations 1,755
 - Indicated Abuse Harms 343 (20%)
- Neglect Allegations 4,142
 - Indicated Neglect Harms 1,102 (27%)

Data Source: DCFS Quality Assurance, 07/01/17 – 06/30/18

Top Indicated Allegations in Winnebago County

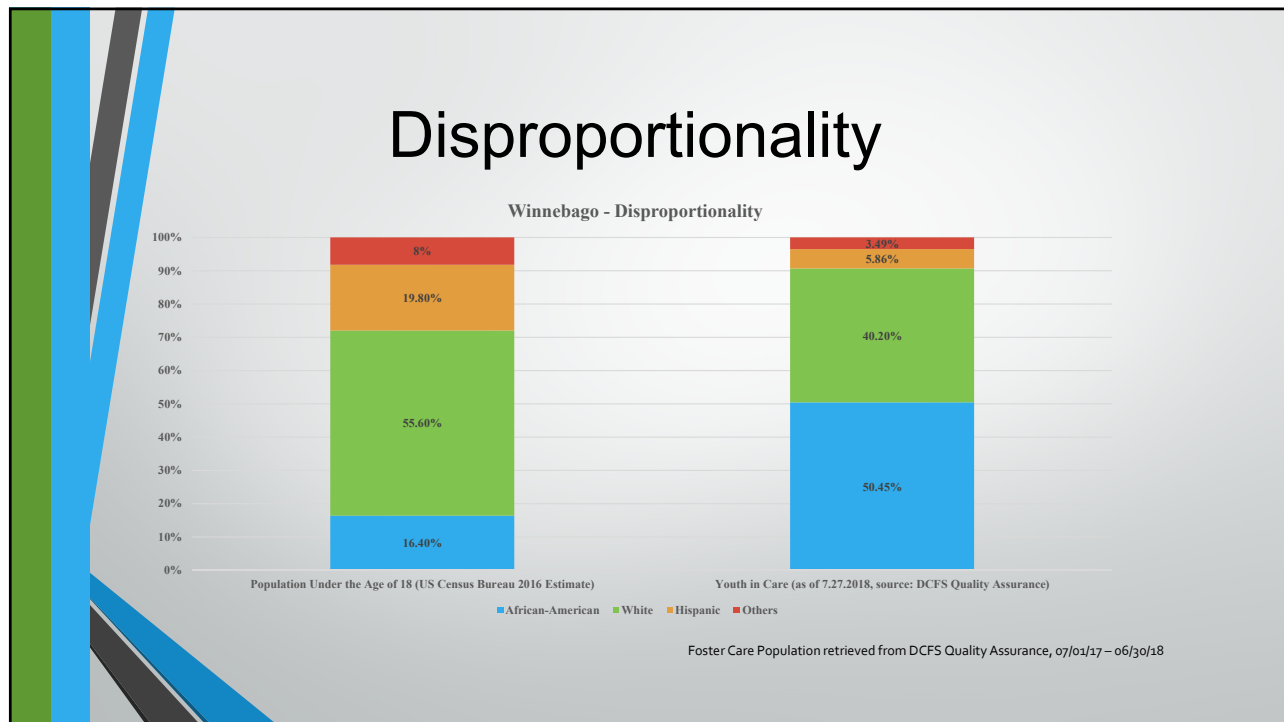
Indicated Abuse Category	
Substantial risk of injury/Substantial risk of sexual injury	198
Sexual abuse	81
Physical abuse	59
Indicated Neglect Category	
Blatant disregard	852
726 indicated allegations of blatant disregard - substantial risk of injury	
Lack of supervision	179
Environmental neglect	53

Data Source: DCFS Quality Assurance, 07/01/17 – 06/30/18

Disproportionality

- Disproportionality in child welfare refers to differences in the percentage of children of a certain racial / ethnic group in the population when compared to the percentage of the children of the same group in the child welfare system

Disproportionality



Disproportionality

- African American children comprise only 16.4% of the total youth population in Winnebago County, but 50.5% of youth are in the foster care
- Hispanic youth are less represented in the foster care system (5.9%) than they are in the total youth population in Winnebago County (19.8%)



Make a Difference!